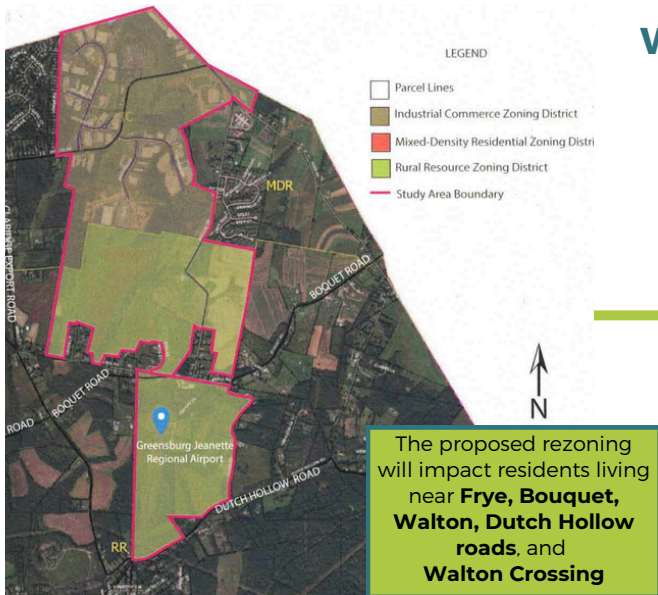


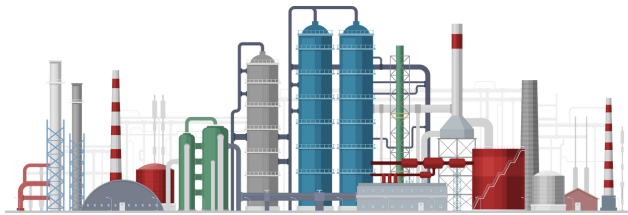


# PENN TOWNSHIP IS PLANNING TO REZONE YOUR NEIGHBORHOOD



## WHAT'S THE ISSUE?

Penn Township Commissioners have been working **behind closed doors** since February 2024 with a consultant company, Strategic Solutions, to rezone a large amount of land without telling the residents who will be most affected



## WHAT GOES IN AN INDUSTRIAL ZONE?

- Truck stops
- Industrial materials processing facilities
- Methane gas compressor stations
- Methane gas processing facilities
- Solar arrays
- Industrial warehouses
- Fracking waste injection wells
- Additional heavy industrial uses

## IMPORTANT DATES:

**October 15:** Protect PT Resident Meeting @ **7pm** at Protect PT's Education Center: **3344 Rt 130, Harrison City**

**October 16:** Board of Commissioners Monthly Meeting

**November 4:** Planning Commission Meeting

**November 20:** Penn Township Board of Commissioners Meeting to **finalize vote on rezoning changes**

## CONTACT YOUR COMMISSIONER:

**MEETINGS ARE THE 2ND AND 3RD WEDNESDAY OF EACH MONTH**

Ward 1, Jeff Shula  
724-744-7631  
jshulacom1@penntwp.org



Ward 2, Lisa Rose Zaucha  
724-744-2172  
lisazaucha@penntwp.org

Ward 3, Chuck Konkus  
412-389-9181  
chuck.konkus@penntwp.org

Ward 4, Chuck Miller  
724-858-7221  
cmiller@penntwp.org

Ward 5, Jen Ramien  
412-335-6681  
jramien@penntwp.org

## WHY SHOULD YOU CARE?

**YOUR PROPERTY VALUE & QUALITY OF LIFE ARE AT RISK**

- Your rural neighborhood will shift to host noisy, busy, heavy industrial activity
- Residents will be exposed to the different stages of this heavy industrial process in close proximity to homes, businesses, and senior living facilities
- Residents are the **ONLY** people who can really convince the Commissioners to **STOP** the rezoning
- **WHAT ELSE SHOULD BE INCLUDED?**



## WHAT CAN I DO AS AN IMPACTED RESIDENT?





EXAMPLES OF INDUSTRIAL COMPRESSOR STATIONS THAT WILL BE ALLOWED IN CLOSE PROXIMITY TO YOUR RURAL HOME



## TAKE ACTION NOW!

- **Show up** to local meeting and voice your concern
- Call your commissioner and urge them to vote 'NO' to rezoning
- Email your commissioner and ask for more protections from industrial activity in your rural neighborhood
- **Tell the PT Commissioners to say NO to rezone!** [HTTPS://PROTECTPT.INFO/NOREZONE](https://protectpt.info/norezone)



SCAN ME

Check out our recommendations for the ordinance that will Protect PT at [protectpt.org/ordinance](https://protectpt.org/ordinance).



## BECOME A MEMBER!

Protect PT depends on its members to fulfill our mission of ensuring the safety, security and quality of life for our community.

**Protect PT**

Scan me to become a member of Protect PT!



Go to [protectpt.org/membership](https://protectpt.org/membership) to become a member, join our email list, and to get information on activity near you.